

Professional work

Madeline Wentzell

2012-2021

- 3 Bloomington Veterans Memorial
 Design Competition

- 7 West Creek Supportive Housing
 Exterior Design

- 9 St. Nicholas Prayer Garden
 Chapel Design

- 11 Firemen's Park
 Park Shelter Sky Light Studies

- 13 Bent Tree Amenity Interior Renovation
 Childcare Center and Fitness Facility

- 15 Minnehaha Creek Residence
 Exterior Design Study

- 16 292 Design Group Offices
 Ceiling Design

- 17 Chaska Curling Center at Firemen's Park
 Falling Leaves wood Panel Ceiling

Veterans Memorial Competition Entry Bloomington, MN

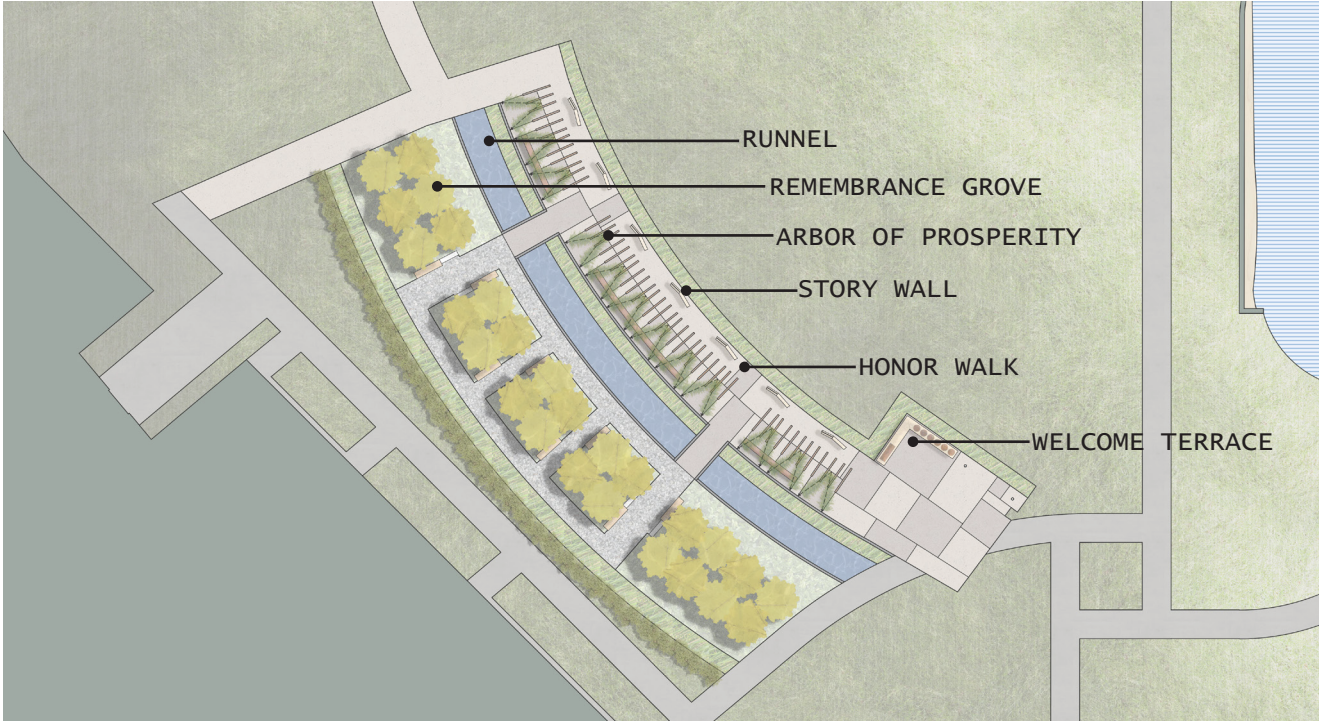
One of the first settlements in the Minnesota territory, the city of Bloomington is home to a large Veteran community and holds strong history of support for the armed forces. To formally honor the Veterans of their community and military families, the city asked four firms to submit designs for a veteran's memorial to be located on city hall campus. The selected design will include elements of Honor, Tribute, Remembrance and Reflection. The memorial includes a space for the community to gather and inform visitors of American history. Our team partnered with landscape architects at Damon Farber, and mosaic artist, Stacia Goodman.



WELCOME TERRACE



REFLECTION AT DUSK



SITE PLAN



A SPACE TO TEACH. A SPACE TO REFLECT.

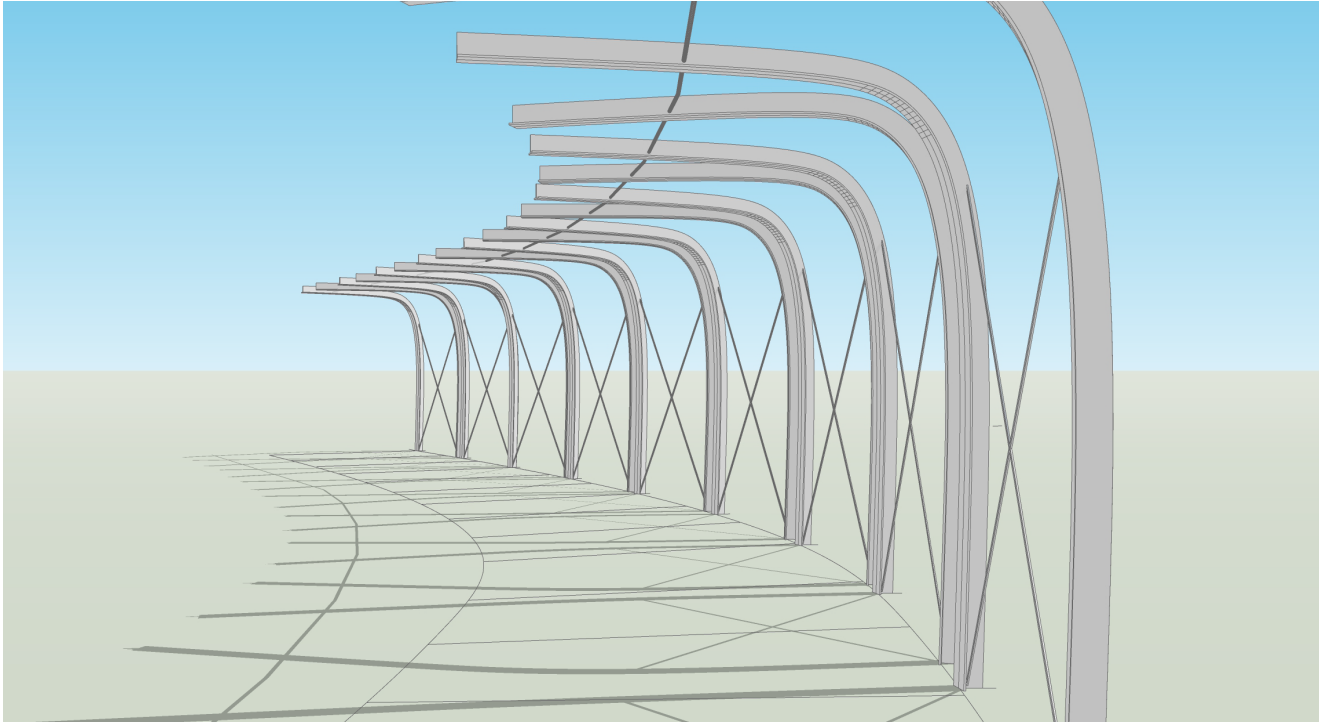


CROSSING THE BRIDGE

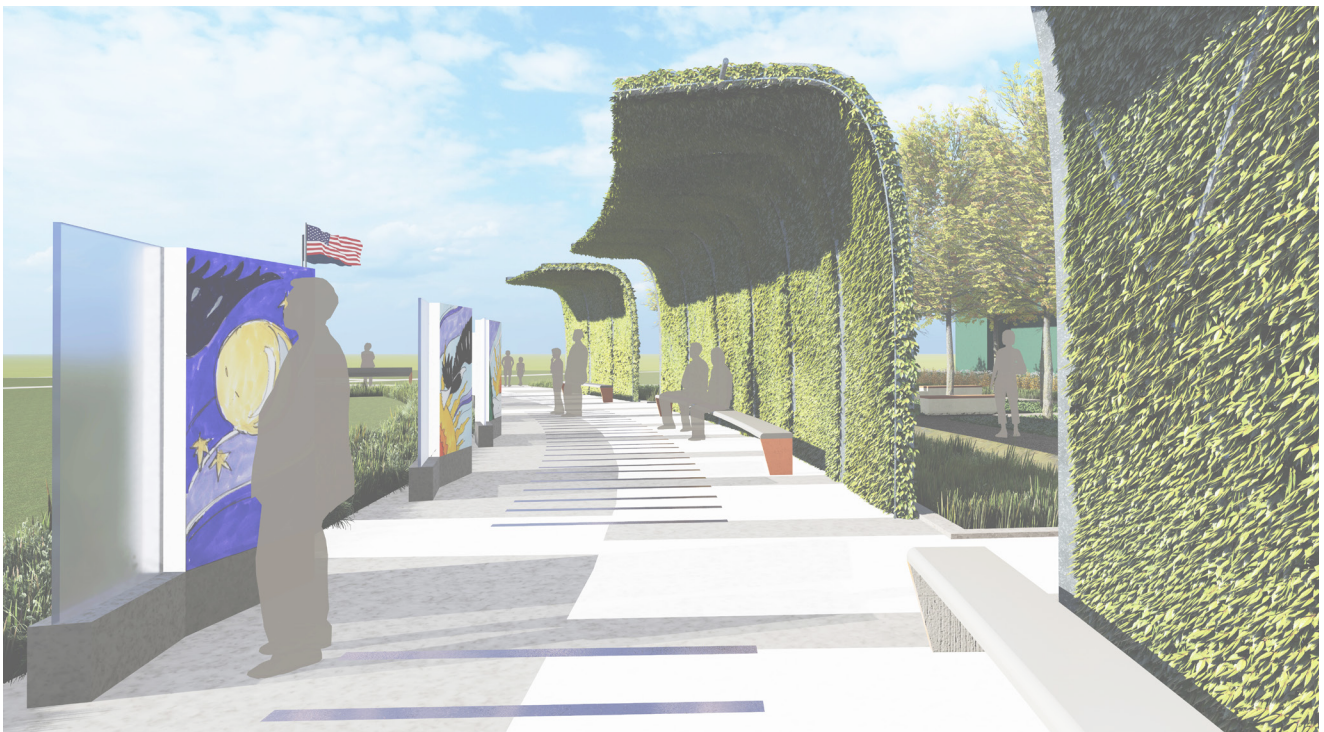
The symbol of the poppy as a simple blossom representing life despite suffering propelled our concept. A welcome terrace intended for groups to gather initiates the experience and leads to the honor walk. A steel arbor follows one edge of the walk while panels paired with mosaics explaining America's role defending freedom line the other edge. Bridges over a runnel lace the honor walk into a Remembrance Grove dedicated to Military Families. Quotes that recall the nobility and courage of those who serve engraved in benches contribute to the peaceful aura of the contemplative space, while the soothing sound of the runnel calms the spirit.



ARBOR OVERHEAD



NAKED ARBOR



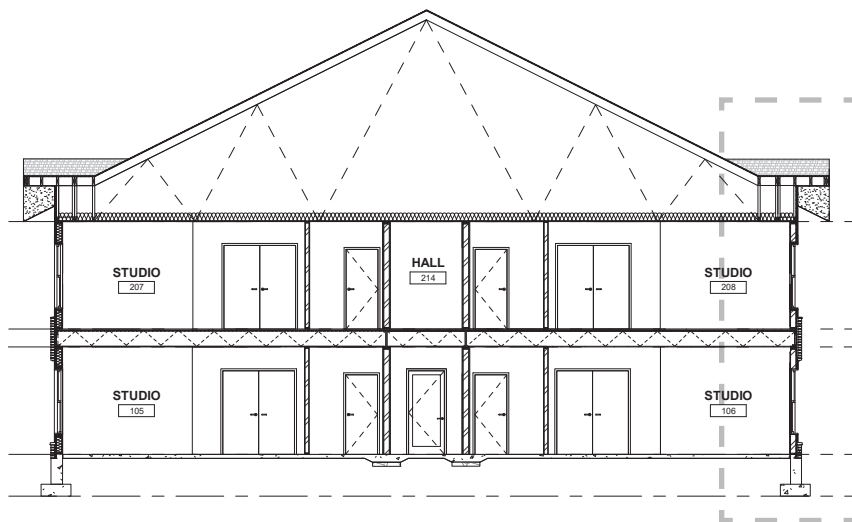
VIEWING THE STORY PANEL

West Creek Supportive Housing Chaska, MN

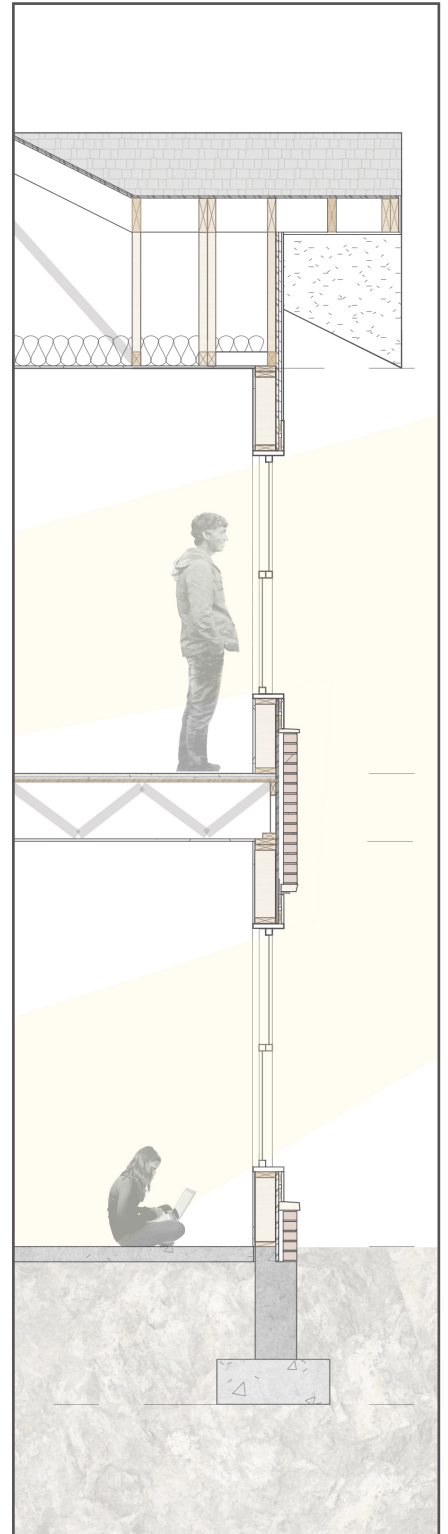
A parcel of land near the Chaska Creek donated to the Minnesota Housing Finance Agency is being developed into a transitional housing facility.

This 18-unit two-story facility is intended to house homeless youth, a recognized need in the community.

The design aimed to create a community feeling and allow for the residents to congregate with various spaces dedicated to group functions. A porch at the building's front entry creates a home like appearance while providing a space for residents to meet. The building is wood frame construction with gable roofs. Multiple stone, brick and colored siding palettes were explored for the facility's exterior.



TRANSVERSE SECTION



WALL SECTION



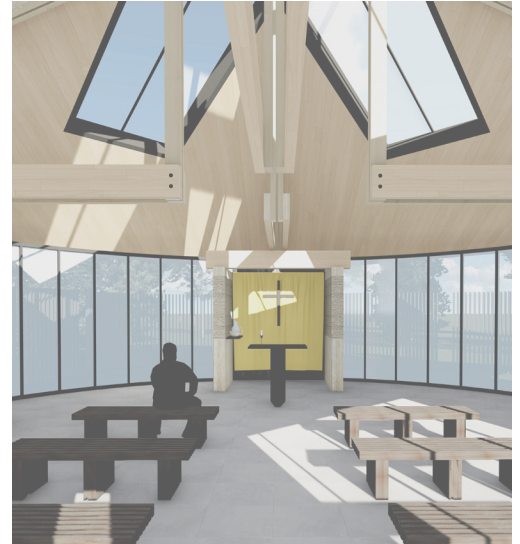
PORCH ENTRY



EXTERIOR CORNER

St. Nicholas' Prayer Garden Chapel Carver, MN

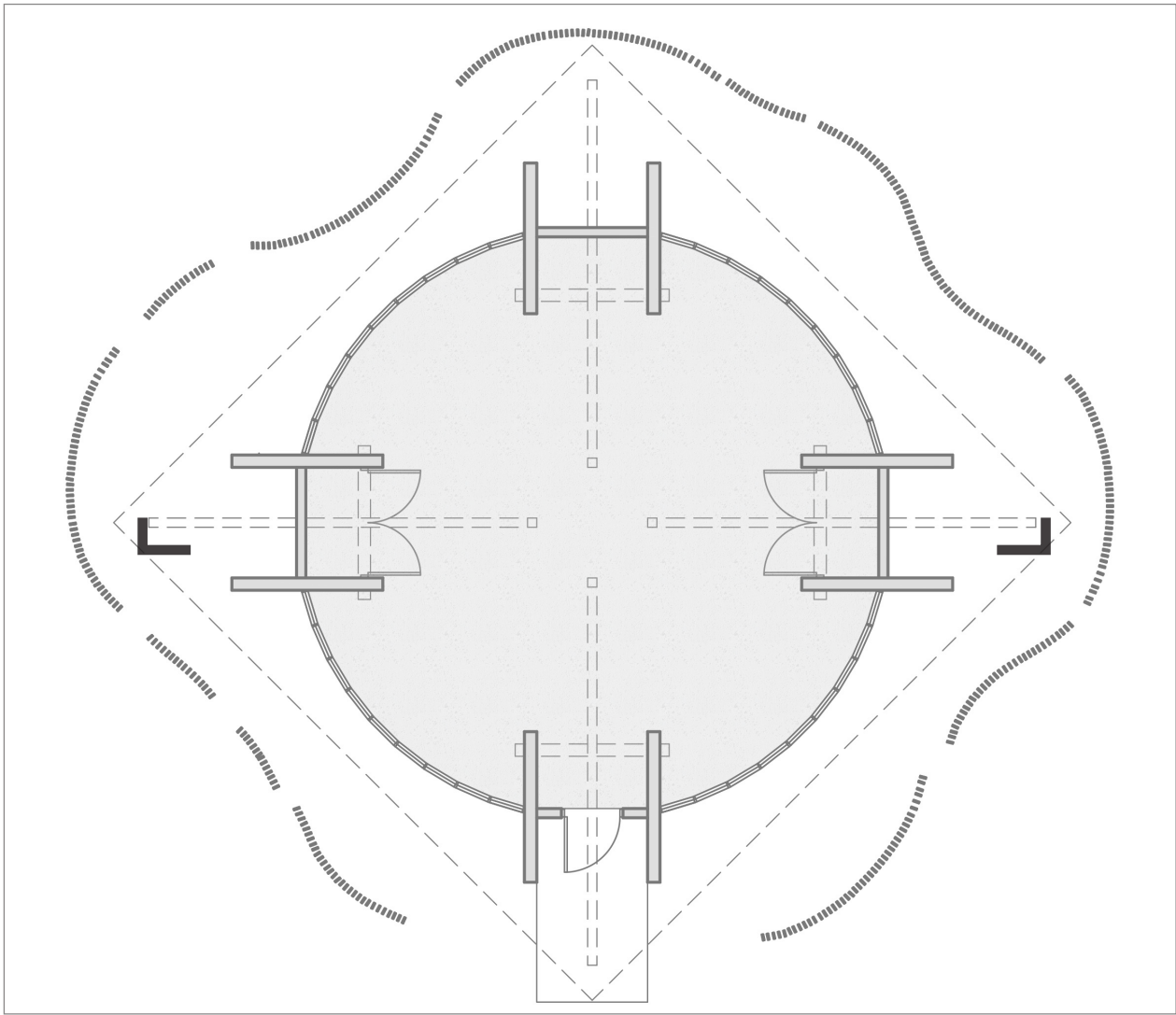
At the end of the journey through St. Nicholas' Prayer Garden is a small chapel dedicated to the Ascension of Christ. This small chapel is circular in plan, a pure geometry representing the eternal life of Christ. As one enters the Ascension Chapel, they proceed through two planes clad in stone, a threshold enclosure contrasting the lofty open space of the roof trusses above. A skylight at the center of the chapel, the roof's peak, brings in a beam of light. An attention to the sky symbolizes Christ's ascension to heaven.



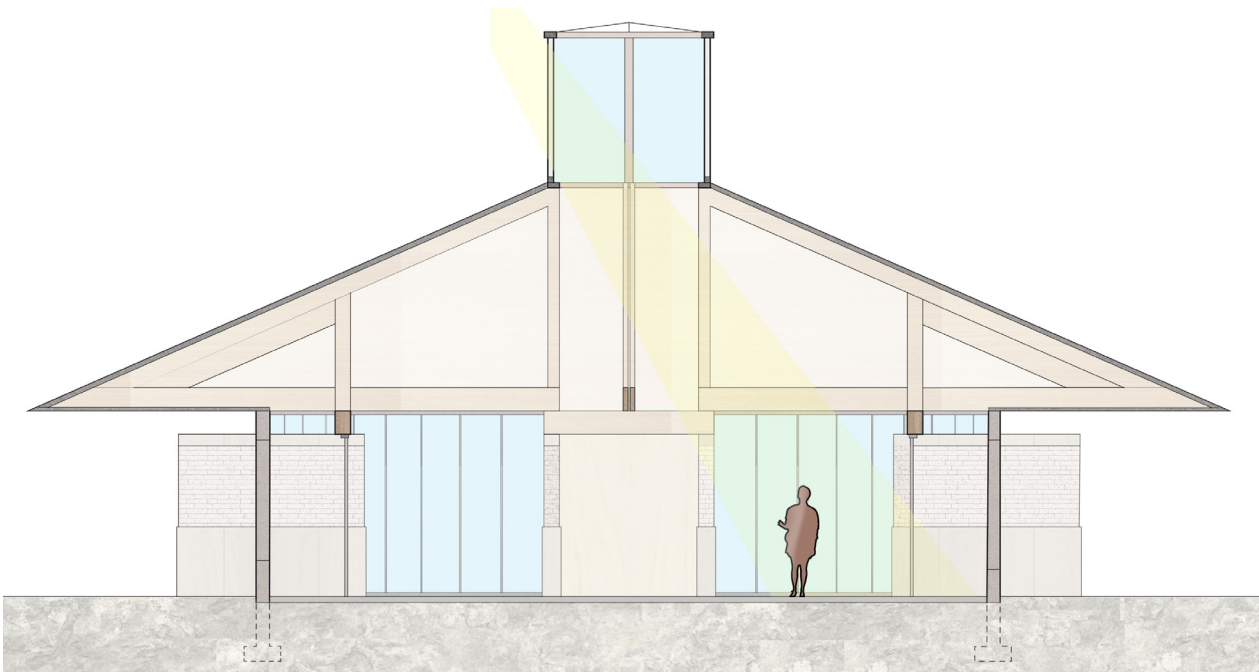
LIGHT FROM ABOVE



WITHIN THE CHAPEL



CHAPEL PLAN



SECTION THROUGH CHAPEL

Park Shelter Design Firemen's Park, Chaska, MN

A redevelopment of Firemen's Park was part of a major economic development plan for downtown Chaska, Minnesota. The park design includes a new park shelter with concession at one end and a servery for gatherings at the other. A study of skylight sizes and colors provided insight to the requirement for transparency within the building. The park shelter is masonry construction utilizing a yellow brick that originated in the city. The extended gable end serves as a picnic pavilion with punctured colored skylights scattering bright colors on the paved surface.



APPROACHING THE PAVILION



SKYLIGHT STUDY 1: STRIPES



SKYLIGHT STUDY 2: RHYTHM



SKYLIGHT STUDY 3: SCATTERED

SKYLIGHT DESIGN STUDIES



GATHERING AT THE SERVERY



PARK SHELTER FLOOR PLAN

Bent Tree Child Care Center and Fitness Facility

Wood slat flanks the back wall of this fitness space. The slat continues across the gym ceiling and follows double height portion of the space, mimicking a cluster of trees, adding a natural element to this basement gym. Linear fixtures dispersed among the slat emphasize the striated rhythm.

The child care center above looks over the double height gym space with scattered punched openings at kid's eye level. The child care center includes colorful finishes. Custom light fixtures and flooring transitions create separate lesson spaces within each room.



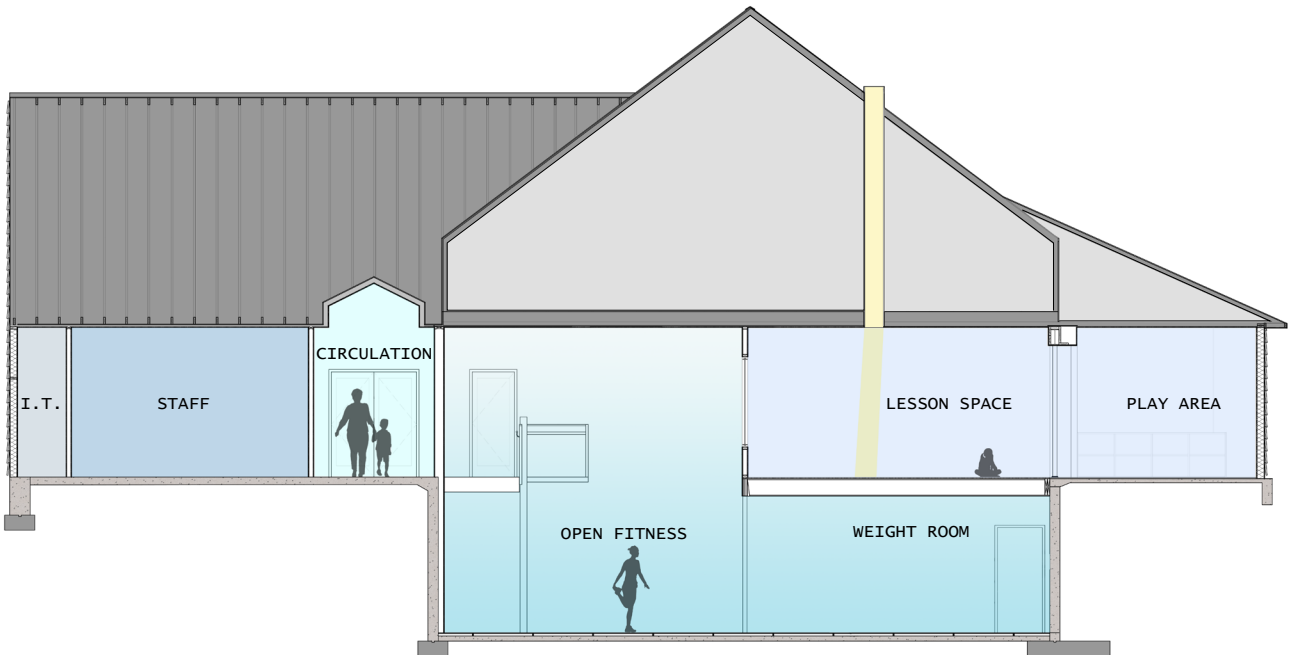
PLAY AREA



LESSON SPACE



GYM WALLS CLAD WITH WOOD SLAT



REMODEL SECTION

Single Family Home Minnehaha Creek

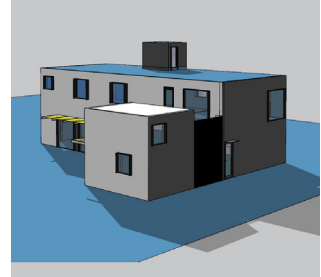
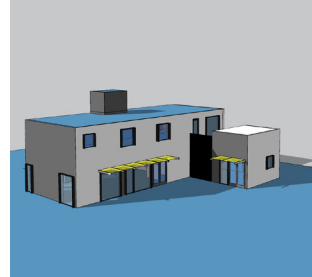
The junction of three intersecting orthogonal volumes dictated the form of this single-family home. The main volume includes the formal living space with three bedrooms on the second story, while the garage with attached double height studio sits perpendicular. A series of quick black and white schematic models aided in representing the homes exterior materials: dark metal panels contrast with dark and light stucco.



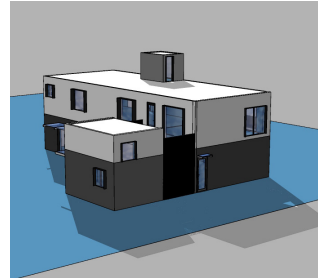
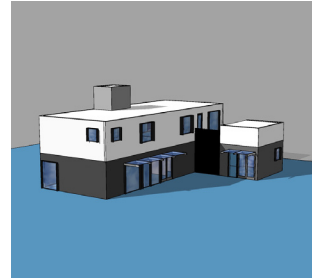
FRONT STOOP



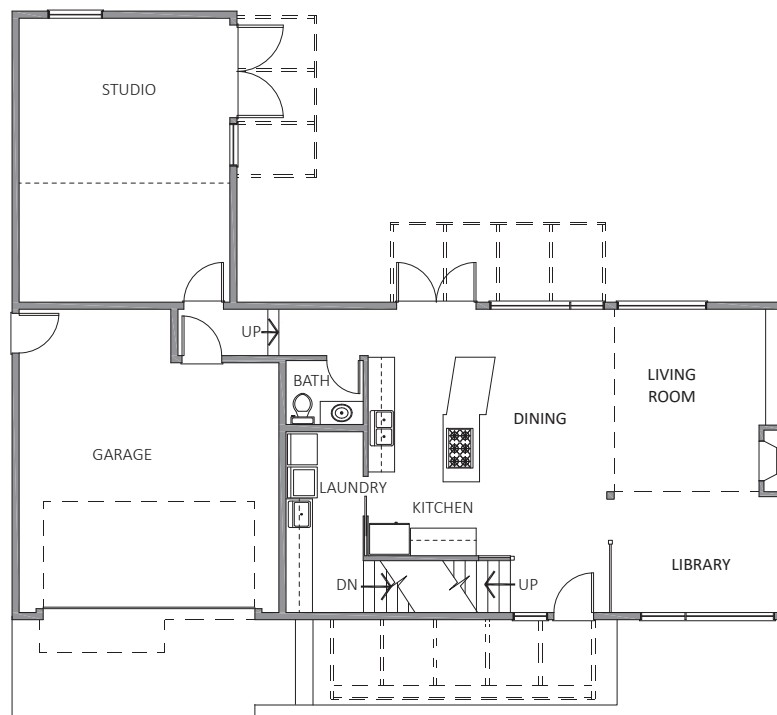
FRONT ELEVATION



WHITE FRONT BLACK SIDES



WHITE TOP BLACK BOTTOM



FIRST FLOOR PLAN



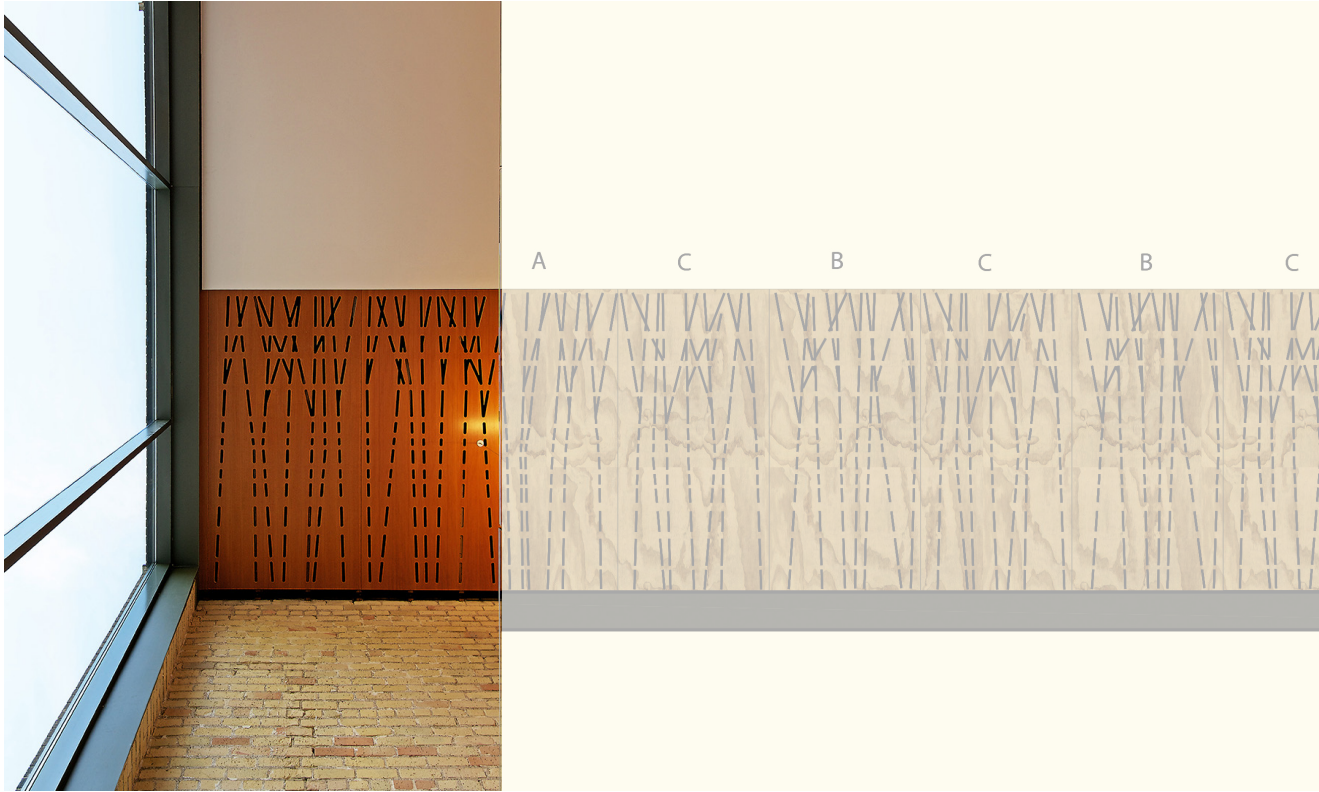
PANEL LAYOUT

Chaska Curling Center Wood Panel Pattern Design

The welcome hall for Chaska Minnesota's new state of the art curling center is a lofty corridor intended as a gathering space for the community. The entry wall covered with wood panels folds toward the ceiling creating a more enclosed space. To further establish the building as part of a public park a pattern of leaves adorns the panels. The leaves fall gently from one corner to the other as if carried by the wind.



WELCOME HALL CORRIDOR



PANEL CEILING FROM BELOW

292 Design Group Offices Wood Ceiling Pattern Design

The narrow storefront office space includes workstations along an exposed yellow brick wall. A strip of wood panels carries the neutral tone to the ceiling. After studying various organic and geometric patterns a linear branch design was chosen. The branches grow out from the exposed brick wall and coordinate with the linear pattern of the carpet below. A section of the street level floor plate was removed to create a connection between the two levels.



WOOD CEILING OVER WORKSTATIONS